

Separation suction plate

FSRLI 120 - FSRLI 290 with pressured air impulse connection

Description

Very robust and extremely resistant flat suction plate with integrated pressured air impulse connection. The gasket and the impulse insert are clipped on and can be easily exchanged when worn out. The suction plates have a lateral vacuum feed and a central pneumatic feed.

Application

- separation and destacking of porous workpieces like chip boards, MDF- or OSB-boards
- by applying pressurized air on the inner sealing ring an engagement of several plates is prevented



FSRLI 120 ... FSRLI 290

Article numbers

Type	Suction pad		Replacement gasket		Connection screw	
	NBR-G	SI-T	NBR-G	SI-T	Type	Art.-Nr:
FSRLI 120 S	1.11.1.0295	1.11.1.0506	2.11.2.0113	2.11.2.0154	ASB-M16-20	1.31.2.0084
FSRLI 170 S	1.11.1.0507	1.11.1.0508	2.11.2.0157	2.11.2.0156	ASB-M16-20	1.31.2.0084
FSRLI 230 S	1.11.1.0509	1.11.1.0510	2.11.2.0158	2.11.2.0159	ASB-M16-20	1.31.2.0084
FSRLI 290 S	1.11.1.0511	1.11.1.0512	2.11.2.0160	2.11.2.0161	ASB-M16-20	1.31.2.0084

Technical details

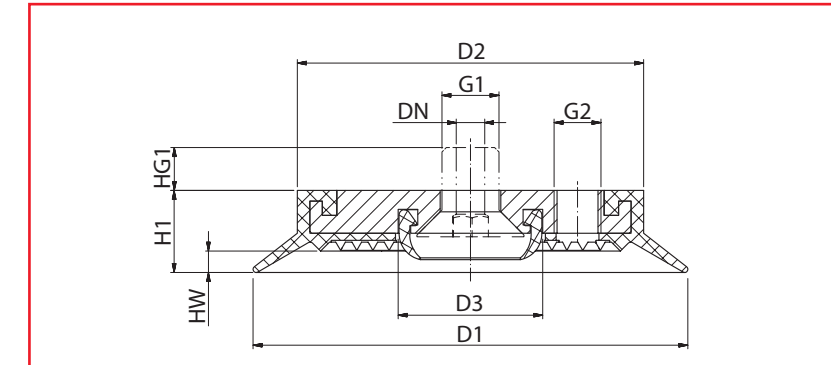
Type	Holding force* (N)	max. Abblasdruck (bar)	Volume** (l)	Weight (kg)
FSRLI 120	550	4	0,06	0,33
FSRLI 170	1.150	4	0,12	0,55
FSRLI 230	2.100	4	0,20	1,00
FSRLI 290	3.600	4	0,78	1,95

* Specifications at 60 % vacuum w/o safety factor, on smooth, dry surfaces

** Volume with suction pad not engaged and unloaded

Separation suction plate

FSRLI 120 - FSRLI 290 with pressured air impulse connection



FSRLI 120 ... FSRLI 290

Dimensions

Type	D1	D2	D3	DN	H1	HW	HG1	G1	G2
FSRLI 120	120	97	40	8	23	6	7	M16	G1/4
FSRLI 170	170	147	40	8	23	6	7	M16	G1/4
FSRLI 230	230	197	40	8	23	6	7	M16	G1/4
FSRLI 290	290	267	40	8	23	6	7	M16	G1/4

Suitable connection elements

Type	Suction pad retainers		Suspension bolt
	SAS	SAK	
FSRLI 120 ... FSRLI 170	SAS-M16x1,5-M16	SAK-M16x1,5-M16	FS ... -M16x1,5
FSRLI 230 ... FSRLI 290	SAS-M20x1,5-M16	SAK-M20x1,5-M16	FS ... -M20x1,5